



Drill press on leveling elements

Leveling elements series, type BNSH

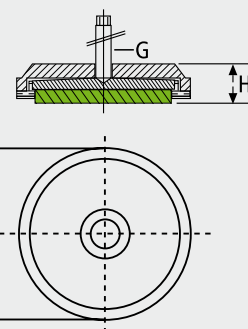
Range of application: BILZ leveling elements BNS are specially suited for the positioning of presses, automatic stamping machines automatic die-casting machines etc.

Examples: BNSH 120 / 50 means: equipped with type 50.

Application: Medium efficiency of isolation.

BNSH 120 / 32 means: equipped with type B32.

Application: For highly effective insulations. In particular used on upper floors.



Type	max. load N/pc.	Type	max. load N/pc.	H = height mm	Ø = mm	range of adjustment mm	G
BNSH 70 / 50	4500	BNSH 70 / 32	2500	42	80	6	M 10 x 1,25 x 100/125
BNSH 80 / 50	8000	BNSH 80 / 32	5000	45	96	18	M 12 x 1,5 x 80/125/150
BNSH 120 / 50	16.000	BNSH 120 / 32	10.000	51	133	18	M 16 x 1,5 x 100/150/200
BNSH 160 / 50	35.000	BNSH 160 / 32	22.000	54	175	18	M 20 x 1,5 x 100/125/150/200
BNSH 175 / 50	43.000	BNSH 175 / 32	27.000	57	200	18	M 20 x 1,5 x 100/125/150/200
BNSH 200 / 50	65.000	BNSH 200 / 32	36.000	64	227	18	M 24 x 2,0 x 150/200
BNSH 250 / 50	90.000	BNSH 250 / 32	48.000	66	270	15	M 30 x 2,0 x 150/200

Leveling Elements, Type Serie BNSHA

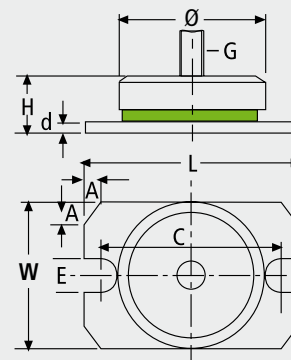
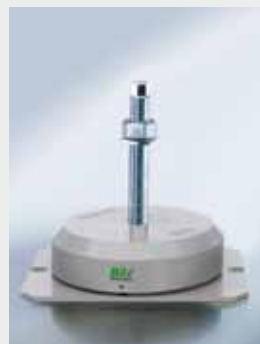
Range of application: BILZ leveling elements BNS are specially suited for the positioning of presses, automatic stamping machines automatic die-casting machines and for all machines which have to be mounted to the floor.

Examples: BNSHA 120 / 50 means: equipped with type B50.

Application: Medium efficiency of isolation.

BNSHA 120 / 32 means: equipped with type B32.

Application: For highly effective insulations. In particular used on upper floors.



Type	L	W	Ø	C	d	E	A	H	G
BNSHA 80	140	90	96	120	5	8	15	50	M 12 x 1,5 x 80/125/150
BNSHA 120	180	125	133	160	5	13	15	59	M 16 x 1,5 x 100/150/200
BNSHA 160	220	170	175	200	5	16	15	65	M 20 x 1,5 x 100/125/150/200
BNSHA 175	260	185	200	230	8	20	20	73	M 20 x 1,5 x 100/125/150/200
BNSHA 200	300	225	227	270	8	20	20	77	M 24 x 2,0 x 150/200
BNSHA 250	330	265	270	300	8	20	20	77	M 30 x 2,0 x 150/200

Range of adjustment and load capacity same as BNSH.

Leveling elements series of types BNV and BNR

BNV (square)

Range of application: BILZ leveling elements BNV + BNR are reliable and economic elements preferably used for light to medium weight machines with respective mounting holes in the machine base.

Examples: BNV 110/4 = 4 means: equipped with type B 4!

Application: milling machines, drilling machines, general use!

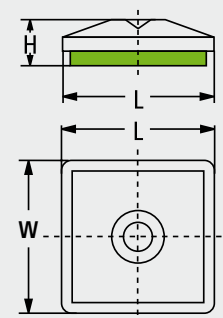
BNV 110/0 = 0 means: equipped with type B 0!

Application: lathes, machining centers etc.!

BNV 110/30-W = 30 W means: equipped with type B 30 W!

Application: soft material for passive isolation – grinders, testing equipment, measuring machines etc.!

Screws and nuts can be supplied upon request (page 15).



Leveling Elements

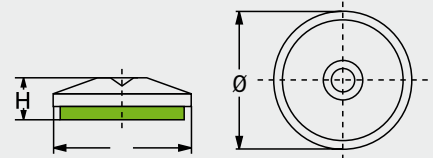
for vibration and structure-borne noise isolation

BNV (square)

Type	load N/pc.	Type	load N/pc.	Type	load N/pc.	L mm	W mm	H type 4 mm	H type 0 mm	H type 30 W
BNV 50/4	1500	BNV 50/0	2000	BNV 50/30 W	650	60	60	22	22	25
BNV 80/4	4500	BNV 80/0	5500	BNV 80/30 W	1600	85	85	24	24	27
BNV 110/4	10000	BNV 110/0	12000	BNV 110/30 W	4000	123	123	27	27	30
BNV 115/4	10000	BNV 115/0	12000	BNV 115/30 W	4000	163	88	29	29	32
BNV 150/4	18000	BNV 150/0	22500	BNV 150/30 W	7000	147	147	32	32	35
BNV 200/4	30000	BNV 200/0	40000	BNV 200/30 W	14000	260	165	35	35	38

BNR (round)

Screws and nuts can be supplied upon request (page 15).



Type	load N/pc.	Type	load N/pc.	Type	load N/pc.	Ø mm	H type 4 mm	H type 0 mm	H type 30 W
BNR 50/4	1500	BNR 50/0	1500	BNR 50/30 W	550	60	21	21	24
BNR 80/4	4000	BNR 80/0	5000	BNR 80/30 W	1400	85	21	21	24
BNR 110/4	8000	BNR 110/0	10000	BNR 110/30 W	3000	121	26	26	29
BNR 150/4	15000	BNR 150/0	18000	BNR 150/30 W	4500	162	30	30	33
BNR 200/4	25000	BNR 200/0	35000	BNR 200/30 W	10000	213	30	30	33

Leveling elements series, types BNVS / BNRS with leveling screws (flexibly connected)

Range of application:

Types **BNVS** + **BNRS** are used in cases where a firm connection of the element to the machine is desirable! Angle differences are equalized by means of the movable leveling screw.

Examples:

BNVS 110/4 = 4 means: equipped with type **B 4**!

Application: milling machines, drilling machines!

BNVS 110/0 = 0 means: equipped with type **B 0**!

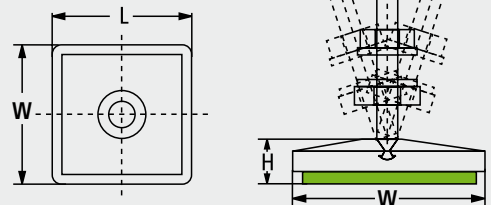
Application: lathes, machining centers etc.!

BNVS 110/30-W = 30 W means: equipped with type **B 30 W**!

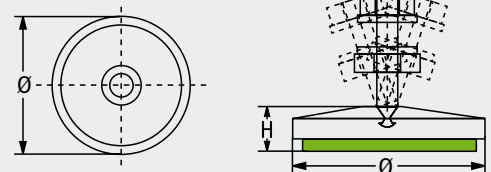
Application: suited for all machines requiring no vibration insulation, anti-slip only.

Important: When ordering please specify the desired size of leveling screw. We stock sizes from M 10 to M 24, in lengths from 70 to 300 mm (page 15).

BNVS (square)



BNRS (round)



Type	load N/pc.	Type	load N/pc.	Type	load N/pc.	W mm	H type 4 mm	H type 0 mm	H type 30 W
BNVS 50/4	1500	BNVS 50/0	2000	BNVS 50/30 W	650	60	22	22	25
BNVS 80/4	4500	BNVS 80/0	5500	BNVS 80/30 W	1600	85	24	24	27
BNVS 110/4	10000	BNVS 110/0	12000	BNVS 110/30 W	4000	123	27	27	30
BNVS 150/4	18000	BNVS 150/0	22500	BNVS 150/30 W	7000	147	32	32	35
BNVS 200/4	30000	BNVS 200/0	40000	BNVS 200/30 W	14000	260	35	35	38

Type	load N/pc.	Type	load N/pc.	Type	load N/pc.	Ø mm	H type 4 mm	H type 0 mm	H type 30 W
BNRS 50/4	1000	BNRS 50/0	1500	BNRS 50/30 W	550	60	21	21	24
BNRS 70/4	4000	BNRS 70/0	4500	BNRS 70/30 W	1400	78	28	28	31
BNRS 110/4	8000	BNRS 110/0	10000	BNRS 110/30 W	3000	121	28	28	31
BNRS 150/4	15000	BNRS 150/0	18000	BNRS 150/30 W	4500	162	30	30	33
BNRS 200/4	25000	BNRS 200/0	35000	BNRS 200/30 W	10000	213	30	30	33



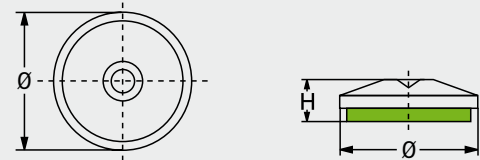
Leveling Elements, Type Series **BNRV** and **BNRSV** in stainless steel

Field of application:

For machines of the food, beverages and tobacco industries.
For machines of the packaging, chemistry and pharmaceutical industries.

Screws and nuts can be supplied on request.

BNRV



Type series **BNRV** without leveling screw

Type	load N/pc.	Type	load N/pc.	Type	load N/pc.	Ø mm	H = type 4 mm	H = type 30-W mm	H = type BR 7 mm
BNRV 50/4	1500	BNRV 50/30-W	500	BNRV 50/BR 7	2000	54	23	26	15
BNRV 70/4	4000	BNRV 70/30-W	1500	BNRV 70/BR 7	6000	76	25	28	17
BNRV 110/4	8000	BNRV 110/30-W	4000	BNRV 110/BR 7	12000	116	27,5	30,5	19,5
BNRV 150/4	15000	BNRV 150/30-W	8000	BNRV 150/BR 7	25000	156	29,5	32,5	21,5

Type **BNRSV** with leveling screw

(flexibly connected)

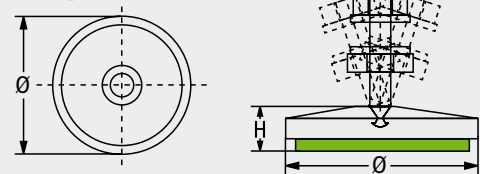
in stainless steel

Examples:

BNRV 110/4 e.g. BNRSV 110/4 = 4 meaning: equipped with medium hard insulating panel. Provides good vibration and structure-borne noise insulation.

BNRV 110/30-W e.g. BNRSV 110/30-W = 30-W meaning: equipped with soft insulating panel. Provides high-quality vibration and structure-borne noise insulation.

BNRSV



BNRV 110/BR 7 e.g. BNRSV 110/BR 7 = BR 7 stands for: equipped with anti-slip panel. No vibration insulation!

Type	load N/pc.	Type	load N/pc.	Type	load N/pc.	leveling screw incl. 2 nuts + 2 washers (VA) mm
BNRSV 50/4	1500	BNRSV 50/30-W	500	BNRSV 50/BR 7	2000	M 10 x 70 / 100 / 200
BNRSV 70/4	4000	BNRSV 70/30-W	1500	BNRSV 70/BR 7	6000	M 12 x 100 / 150 / 200
BNRSV 110/4	8000	BNRSV 110/30-W	4000	BNRSV 110/BR 7	12000	M 16 x 100 / 150 / 200
BNRSV 150/4	15000	BNRSV 150/30-W	8000	BNRSV 150/BR 7	25000	M 20 x 100 / 150 / 200

(All screws are suitable for all element sizes)

Type **BFE** with leveling screw

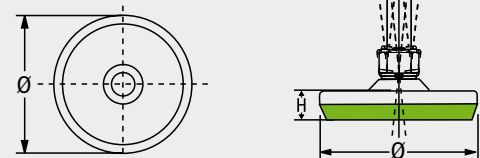
(flexibly connected)

in stainless steel

Field of application:

Low cost stainless steel elements for the food, pharmaceutical, the packing and the chemistry industry.

BFE



Type	Ø mm	H mm	load N/pc.	leveling screw incl. 2 nuts + 2 washers (VA) mm
BFE 50	50	14	3000	M 8 / 10 x 50 / 80 / 100 / 120 / 150 / 180 / 200
BFE 80	80	17	8500	M 12 x 50 / 80 / 100 / 120 / 150 / 180 / 200
BFE 100	100	19	20000	M 16 x 50 / 80 / 100 / 120 / 150 / 180 / 200 / 250 / 300
BFE 125	125	19	30000	M 20 x 50 / 80 / 100 / 120 / 150 / 180 / 200 / 250 / 300
				M 24 x 50 / 80 / 100 / 120 / 150 / 180 / 200 / 250 / 300
				M 30 x 50 / 80 / 100 / 120 / 150 / 180 / 200 / 250 / 300

(All screws are suitable for all element sizes)