

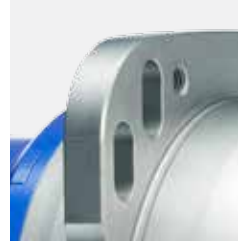
RP+ – the new high-performance planetary gearhead

Sets standards in terms of power density, modularity and easy installation.

The new standard for flange gearheads

The RP+ gearhead series combines all the advantages of the familiar gearhead series.

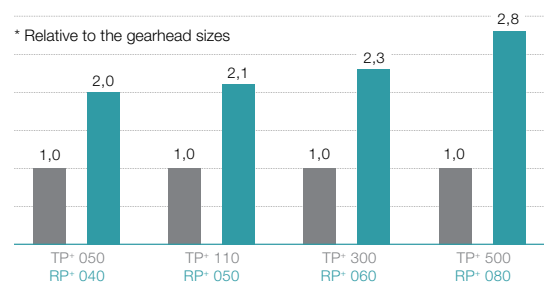
Features include reduced backlash of < 1 arcmin, maximum power density, modular mounting position, simple motor installation, superior running thanks to helical teeth, maximum positioning accuracy and world-class lifespan.



The RP+ impresses with maximum power density

- If your drive requires maximum performance
- If you value world-class engineering
- If you require an even more compact system

Power density comparison between industry standard & RP+ *



The geometry of the RP+ output flange is perfectly adapted to the power density.



The RP+ highperformance planetary gearhead is optimized for rack and pinion applications.

High Performance Linear System

For use where the individual requirements far exceed what has previously been possible. Compared to the industry standard, the values have been improved by 150% on average!

The integrated slots reduce the design and installation requirements to a minimum.

Further information is available in the "High Performance Linear System" catalog or on the Internet at www.rack-pinion.com

The pinions, which are specially adapted to the gearhead enable the transmission of maximum moving forces.

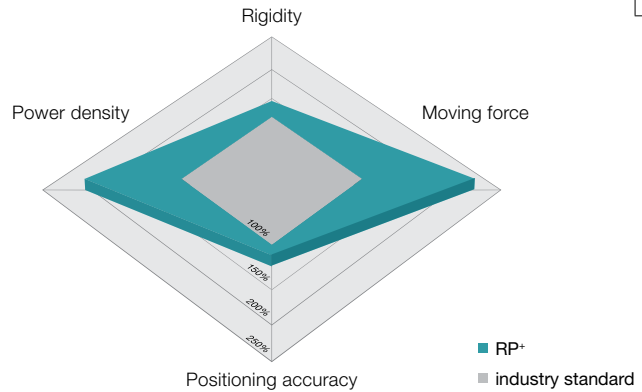
Planetary gearheads
High End

Performance data for RP+

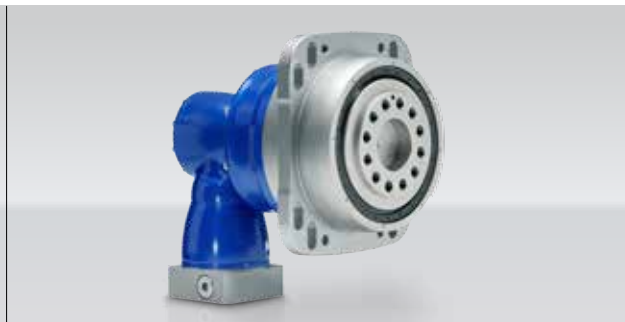
Positioning accuracy [μm]	< 5*
Ratios [-]	4-220
Max. moving force per drive [N]	112,000
Movement speed [m/min]	400
Efficiency [%]	≥ 97
System rigidity [%]	+ 50**

* Direct measuring system required
** Compared to industry standard

Performance data as linear system



The RP+ is also available as the RPM+ actuator version. The RPM+ combines the advantages of the RP+ series in an even more compact design. Thanks to its special design, the permanently excited servo motor ensures maximum power density.



The RPK+, which combines the hypoid angle section and the high performance planetary gearhead RP+ completes the series.